

Welcoming Shade Garden – Fence Section (Under the Japanese Tree Lilac – left to right facing fence)

- Epimedium
- Striped hosta
- Astilbe
- Hosta
- Hellebore
- Hellebore First Dance
- Epimedium
- Astilbe
- Hellebore Ivory Prince(?)
- Astilbe
- Hellebore Maid of Honor
- Forget-Me-Not
- Sedum Neon

Welcome to the Leuchtman Stroll Garden – we've tried to list as many plants as we could identify. The map arrows show which way the plants are listed for each bed.

Welcoming Shade Garden in Front Conifer Bed by Front Porch Right side looking at house:

- Juniperus Chinensis (Daub's Frosted)
- Holly
- Euchera "Coral Bell"
- Epimedium
- Celtic juniper

Conifer Bed by Front Porch Left side looking at house:

- Pieris
- Holly
- Epimedium
- Blue Rug Juniper

Rose Alley (counter-clockwise from right side fence)

- Fantin-Latour
- Grus an Aaken
- Alchemyst
- Brother Cadfael
- Lady of Shallot
- Carefree Beauty
- X
- Quietness

Herbs:
Parsley, Sweet Cicely, Sage, Oregano

Herb Bed (between house and walkway)

- Black-stem Mint
- Lemon Balm
- Creeping Thyme
- Chives
- Parsley
- Bleeding Hearts

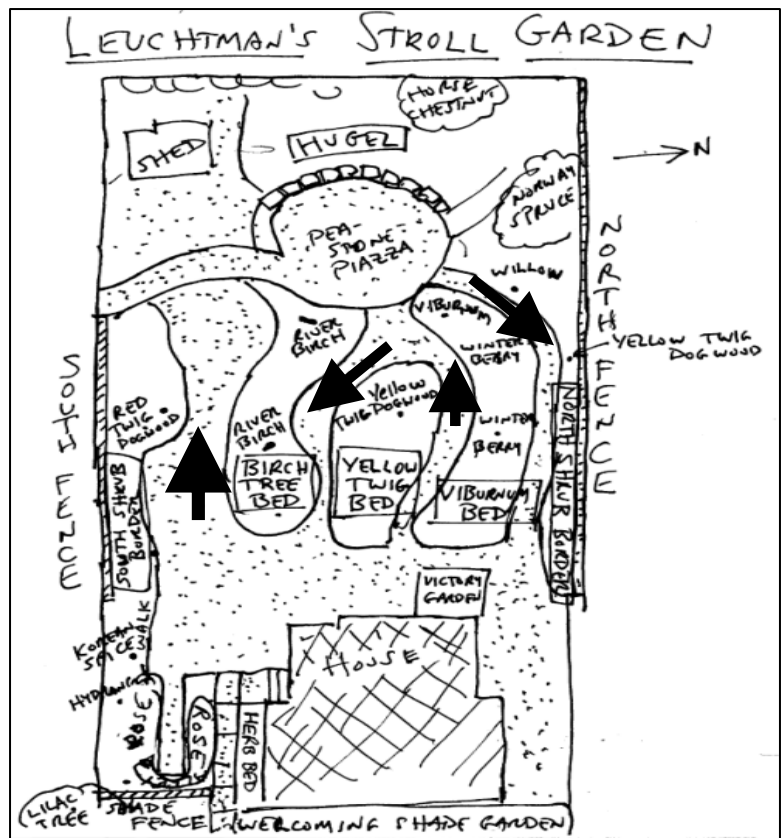
Landscape Roses by Enclosed Porch:

- Paprika
- Drift Peach

Hell Strip (Tree Belt)

- Yarrow
- Astilbe
- Coneflower
- Bee Balm
- Aster
- Sheffies

Overall Map



South Shrub Border (Categorized by type: shrubs / roses / perennials – generally ordered front to back)

Limelight hydrangea
 Angel's Blush hydrangea
 Lilac

Purple Rain kordes rose
 Polar Express kordes rose
 Thomas Affleck rose
 Folksinger Buck rose
 The Fairy
 Zaide kordes rose
 Knockout red rose

Goldheart redbud tree
 Korean Spice bush
 Firelight hydrangea
 Viburnum
 Purington Rose
 Lion's Fairy tale rose
 Red Twig Dogwood
 Rhubarb
 Raspberries

Perennials in this bed
 Small irises
 Golden small hosta
 2 Grass clumps
 Alchemilla lady's mantle
 Astilbe
 Aster
 Speedwell veronica
 Alma Potchke aster
 Delphiniums
 2 honeysuckle
 Peonies
 Purington Pink rose
 Tiny irises
 Small delphinium
 Cosmos
 Lion's Fairy Tale rose



Birch Tree Bed Starting near house

Rudbeckia
 Daylilies
 Japanese anemones
 Grape hyacinths
 European ginger
 Bistort
 Geum Prairie Smoke
 Joe Pye Weed
 Fothergilla
 Woodland creeping phlox
 Itea virginica
 Henry's Garnet
 Bee Balm
 Daylilies by Pea-Stone Walk

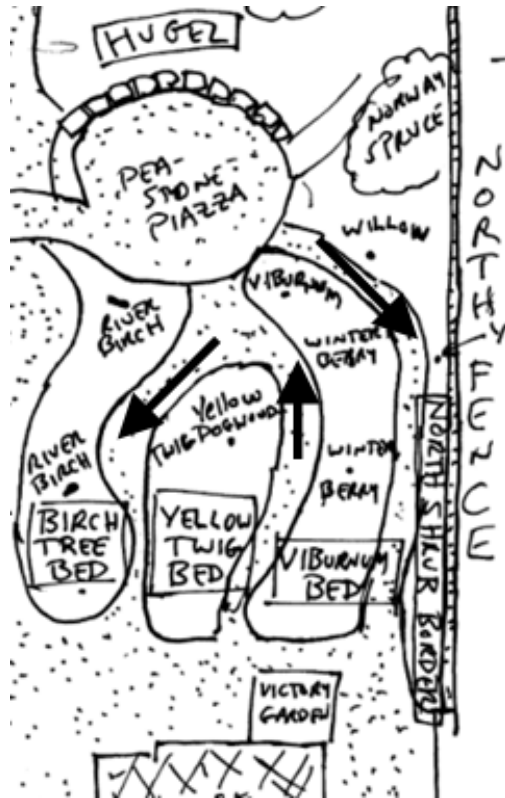
Hugel
North (right) to South (left)

Mountain Laurel
 Wood Poppy
 Queen of the Prairie
 Primroses
 Rhododendron
 Irises
 Low Asters (?)
 Rhododendron
 May Apples
 Mountain Laurel

Daylilies in "teardrop" bed in Pea-Stone
 Piazza

North side of Birch Tree bed going back toward house:

- Birch Tree (smaller)
- Calycanthus
- Queen of the Prairie
- ?
- ?
- Goldheart bleeding heart
- Astilbe
- Native bee balm
- Foam flower
- Winterberry
- Sedum spurum
- Cone flowers
- Daylilies
- Columbine
- Yellow flower



North side of Yellow Twig bed starting near house

- Boltonia
- Burnet?? Family Rosaceae? Sanguisorba Canadensis
- Russian Sage
- Summersweet shrub
- Cranesbill
- Astilbe
- Chamomile
- Geeum Tempo Yellow
- Geeum Orange
- Daylily

Yellow Twig Bed going back toward house:

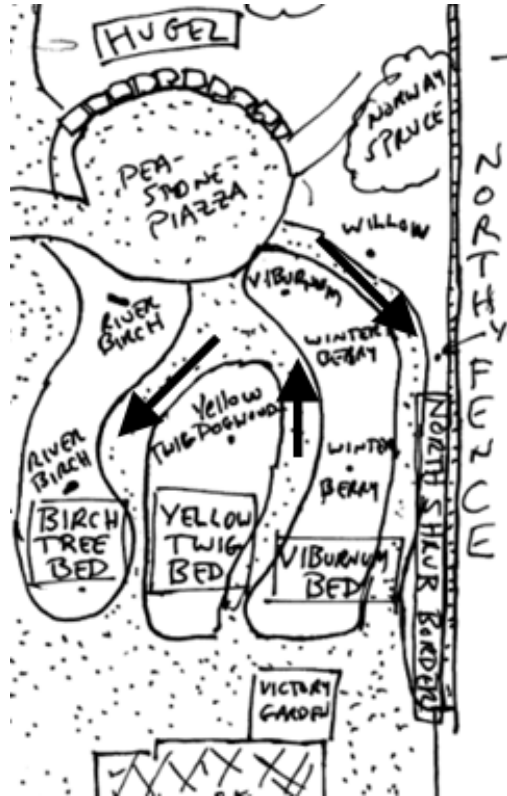
- (ground cover?)
- Yellow Twig Dogwood
- Jacob's ladder
- Fragrant Sumac
- Aster?
- Husker's Red (red and yellow flower?)
- Tooth Ache Plant
- Hosta
- Zinnia

Viburnum Bed Starting near house

- Achillea Pink
- Poppy
- Walking Iris
- Zinnia
- (mystery plant)?
- Aster
- Tiarella
- Meadow Rue
- Joe Pye Weed
- Hosta
- Sanguisorba Canadensis
- Heuchera
- Coreopsis
- Troillus
- Digitallis
- Paradise Blue Phlox
- Echeuacea (?)
- Coreopsis
- White Iris
- (mystery plant)?
- Mountain Mint
- Daylilies (3)
- Columbine
- Viburnum

North side of Viburnum bed going back toward house:

- Iris Crustata
- Turtlehead
- Liatis Kebold (2)
- Husker's Red
- Fairy Bells
- Winterberry (male)
- Daylily Altisuna (2?)
- Winterberry (female)
- Cranesbill
- Cardinal Flower
- (unknown groundcover?)
- Quince
- Agastache
- (unknown silver ground cover?)



North Shrub Border - going back toward house:

- Buttonbush
- Japanese Primroses
- Norway Spruce
- Ferns
- Winterberry – Gold
- Irises
- Willow
- Primroses
- Osier Dogwood
- Elderberry
- Grape Hyacinth
- Hibiscus
- Daffodils
- Sunflowers
- Cosmos
- (unknown plant)?
- Sheffies
- Goat's Beard
- (unknown plant)?
- Boodroot
- Solomon's Seal